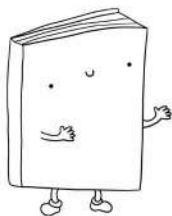


LA - LE - LI - LO - LU

COMPLETA LE PAROLE CON LE LETTERE MANCANTI.



□ □ B R O



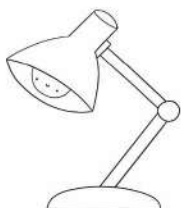
□ □ P O



□ □ T T E



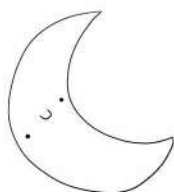
□ □ M A C A



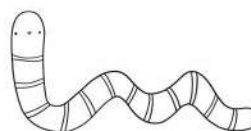
□ □ M P A D A



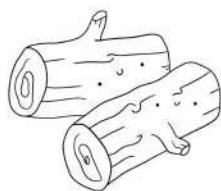
□ □ T T O



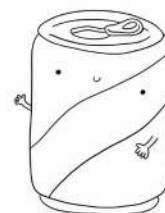
□ □ N A



□ □ M B R I C O



□ □ G N A



□ □ T T I N A